



Instructions and Parts List

Form 1108W

MSS-8W

MARTIN SAFETY SYSTEM with WINCH

NOTES: (1) The complete system is packed in two boxes — post box and house box. House box contains hardware for both post and house assembly. 2) It is necessary to install post before house is put up, but house can be assembled at any time.

Congratulations you have just purchased one of the finest martin houses manufactured in the U.S.A. today. With minimal care you have a house that will provide both you and your martins many years of enjoyment. Please read the following instructions carefully and check the contents of this box and the post box with the parts inventory. Everything possible has been done to assure the quality and quantity of the contents. If you have a discrepancy or a problem please do not return to the store where you purchased it. Notify us immediately by the toll free number or the e-mail address listed in this instruction sheet. We welcome both your questions and comments.

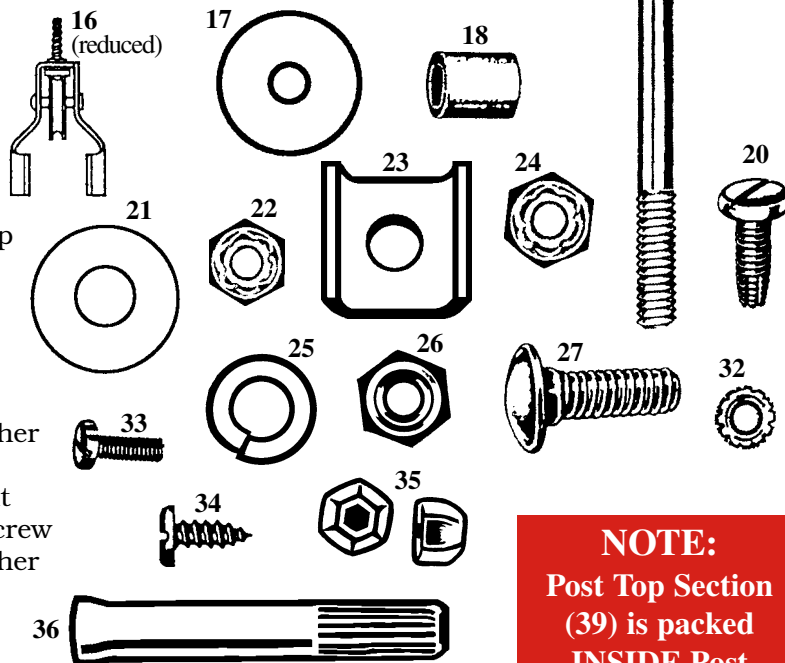


PARTS PACKED IN HOUSE BOX

<u>Code #</u>	<u>Item</u>	<u>Qty.</u>	<u>Description</u>
826201	1	1	Bottom floor
826200	2	1	Top floor
926201	3	1	Roof with gable ends
826202	4	1	Ceiling with plate
25040	5	8	Door
826205	6	4	End with rail
26241	7	8	DN-2 subfloor
25065	8	8	Door stop
826206	9	1	Roof cap with perch
65651	10	4	12-5/8" tie rod
728040	11	1	23' stainless steel cable
26206	12	8	Divider
928000	13	1	Winch with cover and clamp
728206	14	1	Safety handle with clamps
900046	15	1	Large hardware bag

Recommended tools useful for house assembly besides kit wrench (Item 36) provided:

- 1 small, common screwdriver
- 1 medium, common screwdriver
- 1 **each** 1/4" ratchet set **or** a 5/16",
a 3/8" and a 7/16" wrench



#900046 Parts Packed in Large Hardware

726209	16	1	Pulley assembly
24400	17	1	3/4 ODx3/16 ID alum washer
26213	18	2	Locking bushing
32003	19	1	1/4-20x2-1/4 hex head bolt
35264	20	1	10-32x1/2 self threading screw
24380	21	1	3/4 ODx5/16 ID alum washer
40525	22	2	10-24 insert nut
28032	23	1	UHF steel clip
32019	24	1	1/4-20 insert nut
43550	25	4	1/4 lock washer
42500	26	4	1/4-20 hex nut
30052	27	4	1/4-20x3/4 carriage bolt
20416	28	2	Link
28024	29	2	1-1/2 "B" clamp
20414	30	2	1-1/4 "A" clamp
900146	31	1	Small hardware bag

#900146 Parts Packed in Small Hardware

35252	32	12	6-32 Keps nut
35263	33	12	6-32x5/16 binder head machine screw
35250	34	6	#6x3/8 sheet metal screw
35289	35	8	Closed acorn nut
27300	36	1	Kit wrench

Covered by U.S. Pat. Nos: RE25,878; 3,367,632; 3,410,248;
3,426,732; 3,496,913; 3,563,205; D-221,090; 3,643,631; 3,986,480.

Parts Packed in Post Box

<u>Code #</u>	<u>Item</u>	<u>Qty.</u>	<u>Description</u>
27850	37	1	1-1/2x74 post bottom section
27858	38	1	1-1/4x76 post center section
27856	39	1	1-1/4x60-1/2 post top section
28410	40	1	1-3/4x22 TGS ground socket
900149	41	1	Ground socket hardware

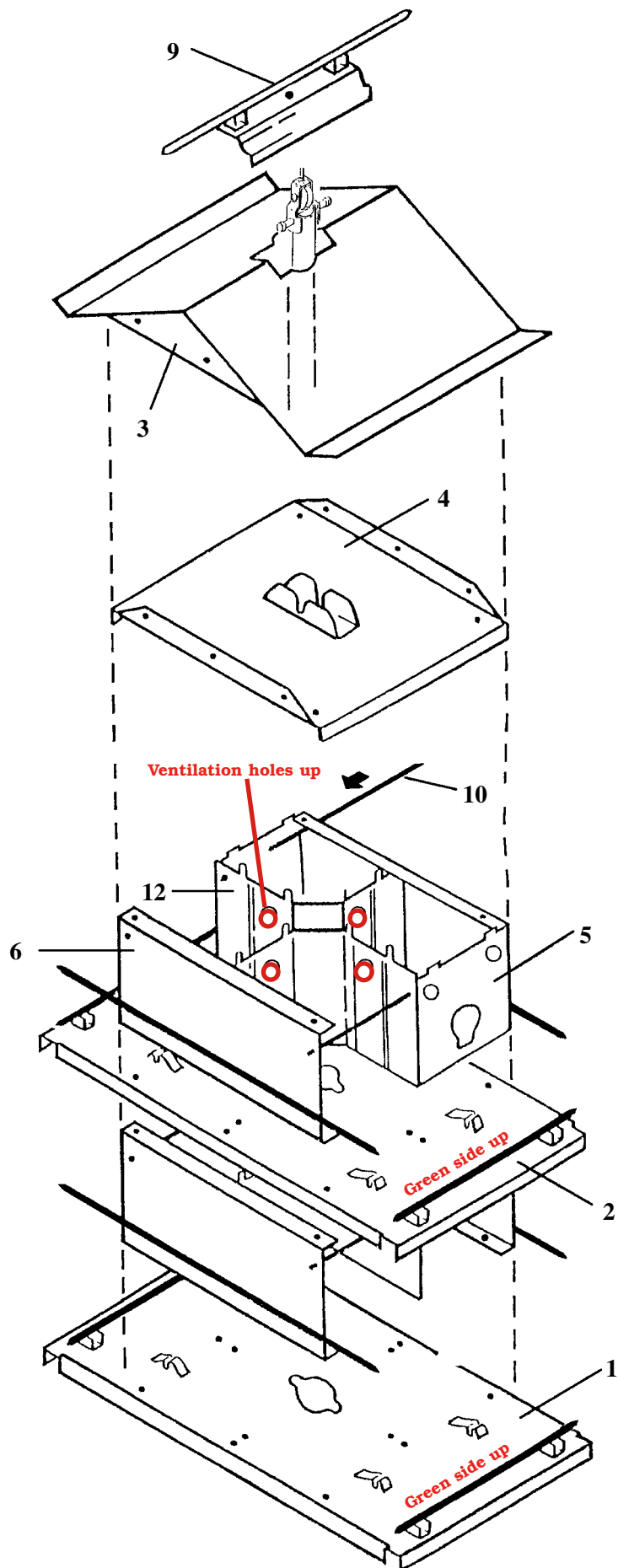
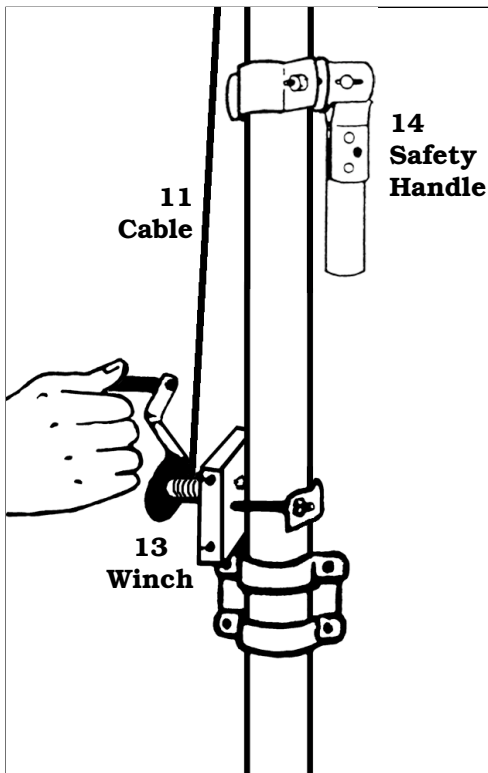
#900149 Parts Packed in Ground Socket Hardware

28024	42	2	1-1/2 "B" clamp
30053	43	2	1/4-20x1-1/4 carriage bolt
43550	44	2	1/4 lock washer
42500	45	2	1/4-20 hex nut

NOTE:
Post Top Section
(39) is packed
INSIDE Post
Bottom Section (37)

BEFORE STARTING ASSEMBLY:

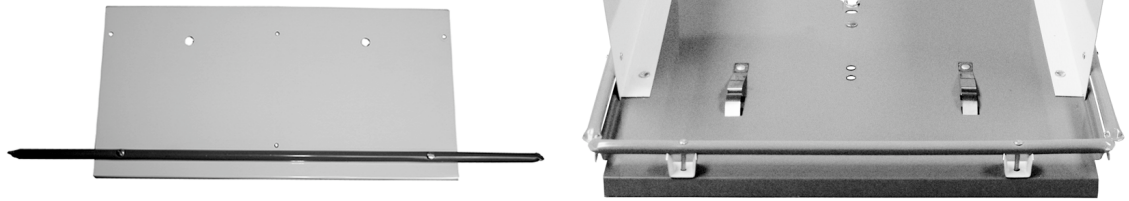
Wipe protective oily coating from all parts' surfaces prior to assembly. Read all instructions before starting assembly. This will acquaint you with each step. The exploded view of house on this page shows each major part numbered to correspond with item numbers on page 1.



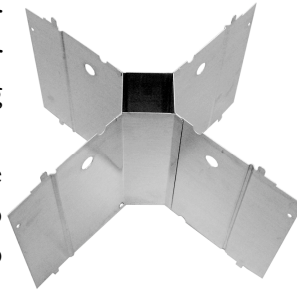
To order Nature House products, parts,
or accessories call 877-833-2478
or 800-255-2692
E-mail <natsoc@adams.net>
*Please use product code number
when ordering parts*

1. DO NOT TIGHTEN ANY FASTENERS UNTIL TOLD TO DO SO.

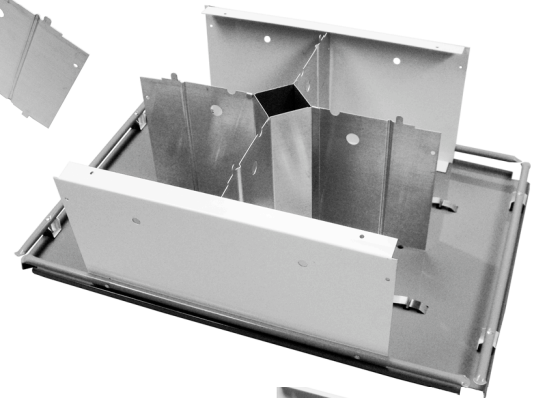
Locate the bottom floor with plate (1) and two ends with rails (6). Attach the two ends to the bottom floor with two each, 6-32x5/16 binder head machine screws (33) and 6-32 keps nuts (32). Flanges on ends point toward each other with rails to the bottom.



2. Join four dividers (12) by attaching each divider section to the adjacent section as shown. Four divider sections are needed for each floor. Secure by bending tabs “A” and “B” at top and bottom of each section. Make sure parts are in their proper location before bending tabs. Each tab has an adjacent cutout to receive the tab when bent. Ventilation holes are at top of the divider section.



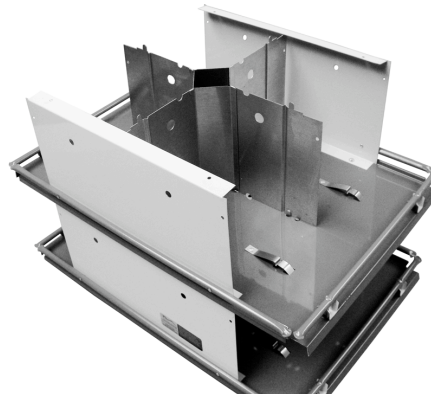
3. Install divider assembly on bottom floor by inserting tabs in holes in floor. **DO NOT BEND THESE TABS.**



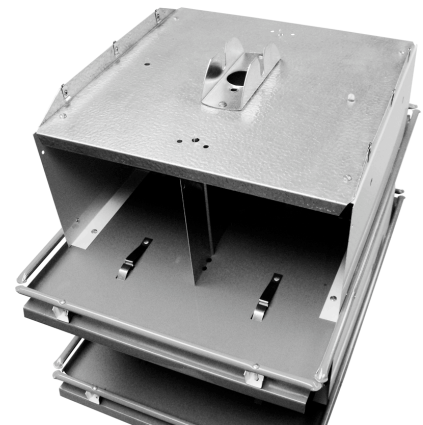
4. Place top floor (2) on top of first floor making sure tabs on top of dividers go through holes in top floor. Attach two ends with rails (6) with two each, 6-32x5/16 binder head machine screws (33) and 6-32 keps nuts (32). Screws go down through ends, top floor and bottom floor ends.



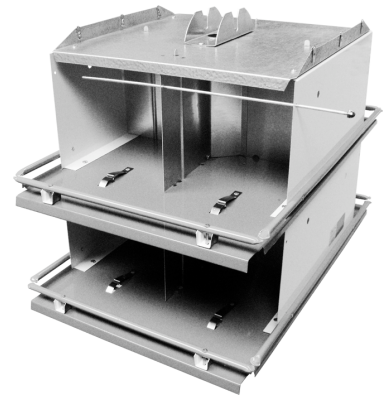
5. Assemble remaining four divider sections (12) as you did for bottom floor and install in the same manner.



6. Fasten ceiling (4) to ends using four each, 6-32x5/16 binder head machine screws (33) and 6-32 keps nuts (32). Make sure tabs on top of divider section protrude through holes in ceiling.



7. Thread one 6-32 closed acorn nut (35) on end of each tie rod (10), finger tight. Install tie rod (10) through one end, divider and out other end. Place 6-32 closed acorn nut (35) on this end of tie rod (10), finger tight. Install the other three tie rods (10) in the same way.



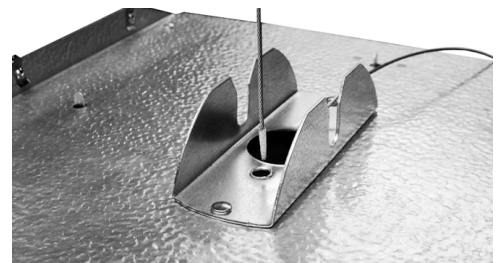
8. Hang doors (5) over tie rods (10). **DO NOT FORCE.** Doors should hinge freely and snap into floor clips. **Tighten all screws in house at this time.**



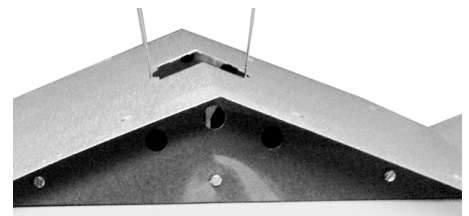
9. Uncoil winch cable (11) being careful not to kink. Turn house upside down on top of waste can or sturdy box. Feed taped end of cable (11) through bottom of house and out small hole in ceiling bracket on same side as stud on bottom floor. Slide looped end of cable over threaded stud. Hold in place with UHF clip (23) and a 10-24 nylon insert nut (22).



10. Turn house back right side up and feed cable (11) down through other small hole in ceiling plate and out bottom of house. Keep a three-foot loop in cable at top of ceiling.



11. Insert loop of cable through hole in center of roof (3) and allow roof to settle onto ceiling with ceiling flanges inside roof assembly. Fasten roof to ceiling with six 6x3/8 sheet metal screws (34). Do not over-tighten.

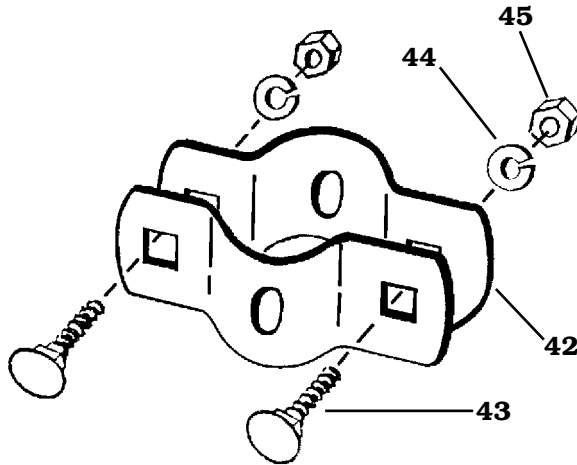


TGS Ground Socket Installation

Ground socket and hardware is packed inside post box.

NOTE: TGS Ground Socket allows the pole and house to be moved to another location without losing the bottom section post. Refer to Post Box Parts list (page 1) to identify parts in drawing/photo below.

12. Assemble “B” tube clamps (42) as shown. Place assembly over slotted end of TGS ground socket (40) and tighten just enough to hold in position.

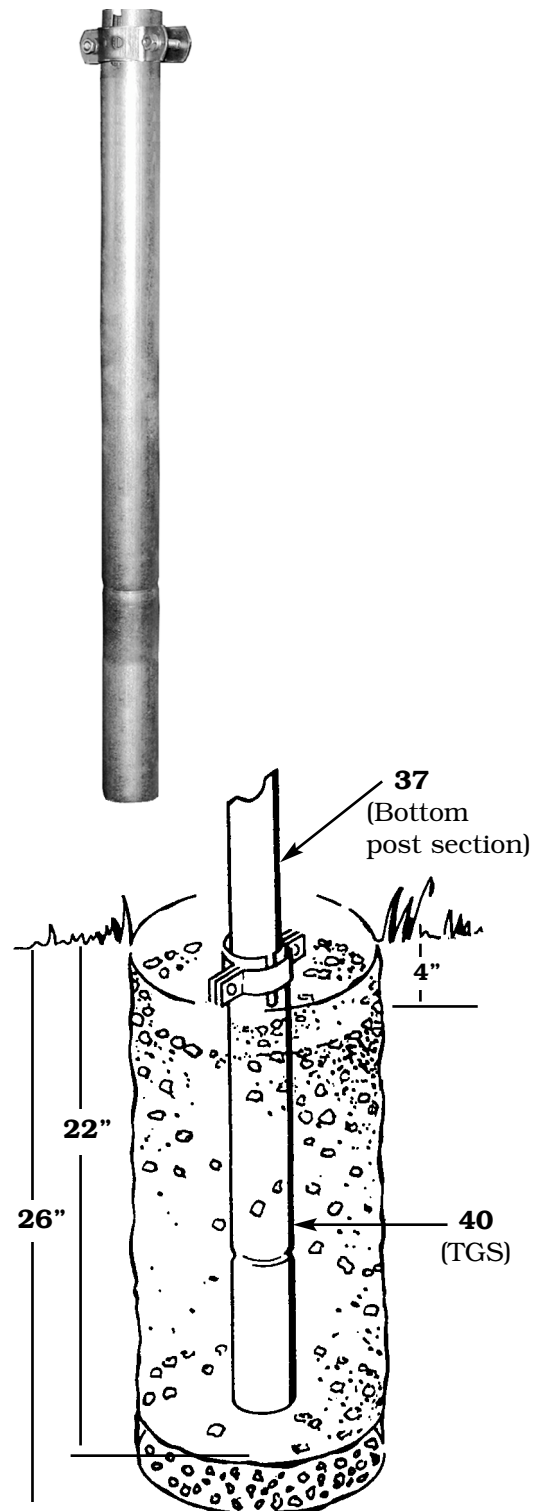


13. Slide post bottom section (37) into socket 18" and tighten assembly securely.

14. Dig hole 8" diameter and 26" deep. Put 4" of coarse gravel in bottom of hole. Place a ball of crumpled newspaper inside lower end of socket to prevent concrete from sealing end. This will allow any water to drain from inside post.

15. Place ground socket/post section assembly in center of hole. Fill with concrete mix to just below slots in upper end of the socket. This will require approximately 80 to 90 pounds of mix. Use guy wires or rope to hold assembly in vertical position while concrete sets.

16. After concrete has hardened, loosen clamps and slide post section into bottom of socket. Re-tighten clamps securely.



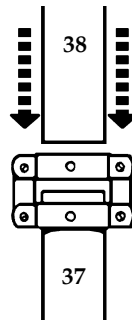
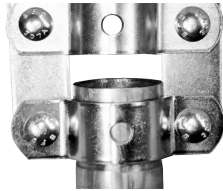
Post Installation

Top section of post (39) is packed inside bottom section (37) and MUST be removed before installation of post.

Recommended tools useful for post assembly and installation:

One shovel, spade or a post-hole digger; **one** tamping stick; **one** level; and **one** 7/16" wrench

17. Assemble tube clamps as shown. Place "B" clamps over top end of bottom section post (37) and tighten nuts. Leave "A" clamps loose.



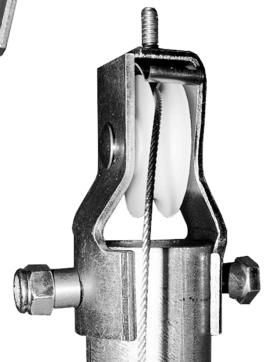
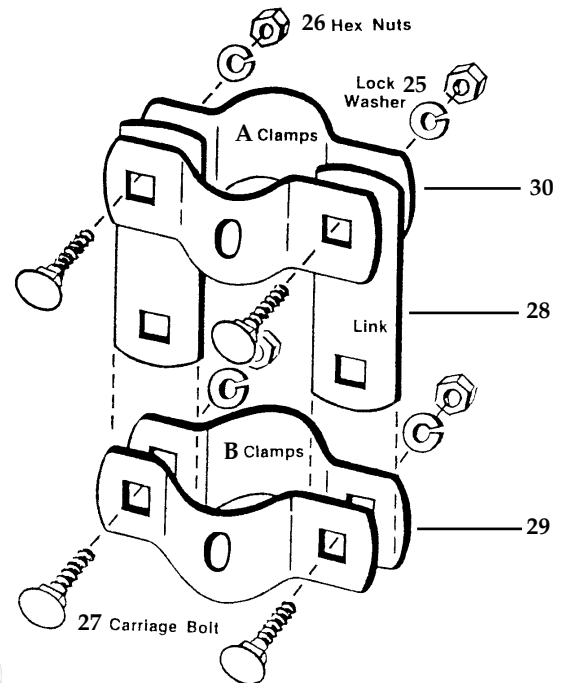
18. Install one 10-32 self threading screw (20) in the upper hole provided in the post bottom section (37). This hole is located 8-15/16" down from the top of the bottom section post (37). This will aid in final assembly of the post at a later time.

19. Slip safety clamp assembly (14) onto top section post (39) by moving handle to a horizontal position and sliding onto post section. The handle should be to the left side of the clamp assembly (14) and the printing should be on the right side of the handle. Slide the safety clamp assembly (14) approximately 18" up the post and lock into place. Keeping the cables straight, slide the house from the top down to rest on the safety clamp assembly (14).

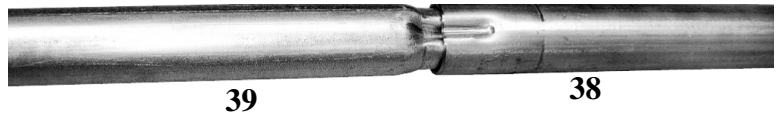


20. Work the cable loop into the pulley assembly (16) by rotating one leg of the pulley assembly 90 degrees. Check to make sure the cables are not crossed.

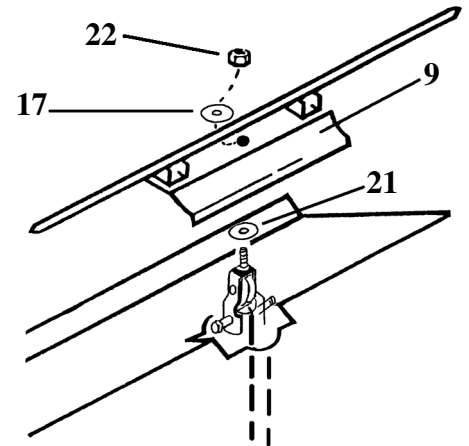
21. Place this assembly over the post end and bolt in place using 1/4-20x2-1/4 hex head bolt (19), two brass locking bushings (18) and 1/4-20 insert nut (24). At this time pull any extra slack out of the cable that exists between the house and pulley by pulling on the end of the cable protruding through the bottom of the floor. At all times be sure the cable is centered in the pulley groove.



22. Attach center section post (38) to top section post (39) as shown. Note alignment of crimped end of top section post (39) and grooved end of center section post (38).

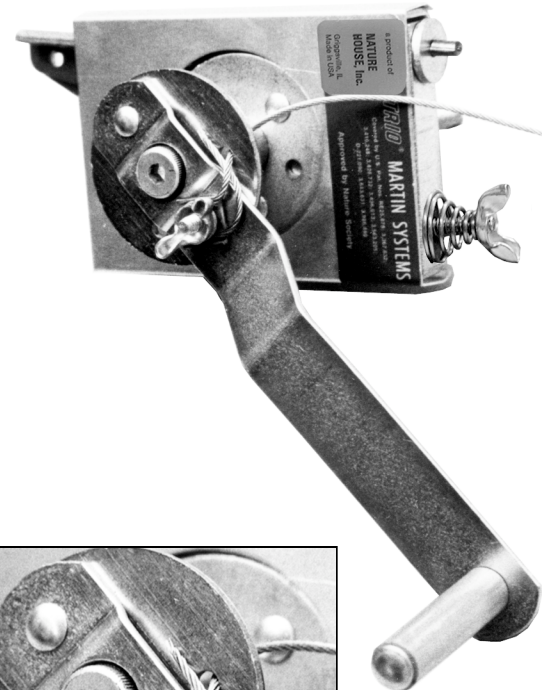


23. Place 3/4 O.D.x5/16 I.D. aluminum washer (21) over stud at top end of pulley assembly (16). Add roof cap and perch assembly (9) followed by 3/4 O.D.x3/16 I.D. aluminum washer (17). Secure in place by installing 10-24 insert nut (22).

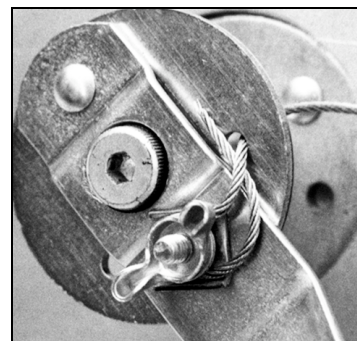


24. To safely lift and install house, two people are recommended. Lower house to within two feet of the bottom end of the center section post (38). This will provide the lowest center of gravity. Lift house and upper post sections to vertical position. Slide bottom end of center section post (38) into top end of bottom section post (37) until it rests on the screw. Rotate upper post sections and house until pulley groove is in line with clamp assembly that secures center section post (38) to bottom section post (37). Tighten nuts on clamp assembly.

25. Remove two 1/4-20 keps nuts and clamp from winch assembly (13). Install winch assembly (13) 1/2" above clamp assembly that secures bottom section post (37) to center section post (38) and at right angle on the right side of the post. Reinstall clamp and 1/4-20 keps nuts. Loose end of winch cable should be directly over winch. If it is not, rotate house until it is.

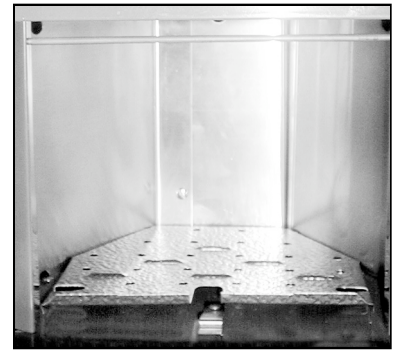


26. Insert cable through hole in winch and secure in place using #10 flat washer, #10 lock washer and wing nut from winch assembly. Turn winch handle clockwise until all slack is out of cable. Adjust wing nut on winch brake cable until house will not fall unless the winch handle is turned counterclockwise.



To reduce tampering with installation, pawl and winch case can be fastened together through holes provided. If this is desired, use bolt and nut, wire or padlock for this purpose.

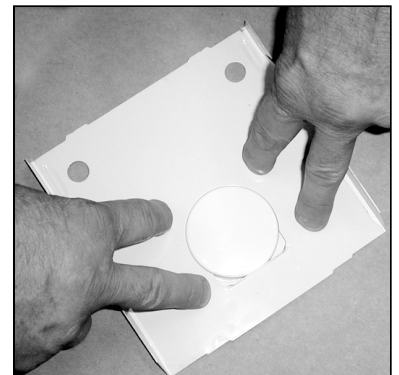
27. DN-2 subfloors (7) can now be placed in house. Flanges on sides of floor trays go down. Install eight subfloors (7) in compartments.



28. Use winter door stops (8) to close house during winter months. Leave door stops in place until time for purple martins to arrive to prevent earlier arrival of other species such as tree swallows and bluebirds from claiming the house in their territory.



29. To install door stops (8): remove door (5), place door stop upside down on a flat surface and press door onto the door stop, as shown. Then rehang door on rod in martin house.



For replacement parts or accessories call toll-free 877-833-2478 or 800-255-2692:



Nature House products by
ERVA TOOL & MFG CO INC
3100 W GRAND AVE, CHICAGO IL 60622-4324



Phone 800-342-3782 E-mail <ervatool@sbcglobal.net> Fax 800-342-3781

Nature House — bringing the benefits of nature to your house